

## GUARD YOUR HEART

## GUARD YOUR MIND

## GUARD YOUR BODY

Volume II, Issue 10

May 7, 2009

In this issue...

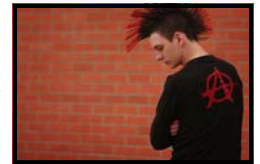
- Teen Fashion: Emo, Punk and Goth

# FASHIONS: TODAY'S TEEN TRENDS

It is apparent that teens and tweens are developing their own eccentric styles in fashion today. We've seen an increase in extreme expression through hair, clothes and makeup. Youth as young as 13 and 14 are sporting outlandish hairstyles and colors. Black nail polish has become a challenge for stores to keep on their shelves. New stereotypes are taking flight as these fads continue to spread. What is the story behind this bizarre fashion? Should parents and teachers be concerned for the mental health of teens with Mohawks?

There are three main categories to discuss when it comes to new trend: Emo, Punk and Goth. While they might seem similar on the surface, each has distinct differences, especially if you ask the teen directly. Most will be eager to explain to you with which trend they identify, along with what type of music and personality is connected. To compare the groups, each is an outlet of self-expression and identity along with a strong link between fashion and music.

The main concept to draw from this article is that everyone is different and the titles of these subcategories are open to interpretation. While generalities are drawn for educational purposes in this article, there will always be exceptions. In each subculture, each person has different personalities, hobbies, values and ambitions. It is impossible to say that all emos are emotionally damaged, all punks participate in self harm or that all goths are psychologically disturbed. There have been no significant studies to show any correlation between mental health and fashion. Regardless of these subcategories, if you suspect any mental or emotional disorder in the teens in your life, please seek a professional right away.



**EMO** Emo stands for "emotional hardcore" or "emotionally charged". It originated in Washington D.C. in the early 1980s and became more popular across the Midwest in the early 2000s with bands such as Jimmy Eat World and Fall Out Boy. It is a broad term that covers a multitude of music, expressions and culture. It is not necessarily depressing or dark in personality. The fashion for boys and girls in this subcategory include tight-fitting, straight legged jeans, long bangs drawn down one side of the face, dark eye makeup, black polished nails, studded belts and canvas sneakers.

**PUNK** Punk includes a personal drive to step out of mainstream society and "go against the grain". This subcategory seems to reflect the motto "I'll do what I want". Popular bands include Good Charlotte and Simple Plan and common themes include expression of negative life setbacks, political rebellion, feeling like an outcast and being raised by a single parent. The uproar of negative feelings in this style can result in an increase of criminal and dangerous behavior. While dark makeup is also common with punk, fashion in this category is more extreme than emos because of the more provocative dress, additional tattoos and piercings and extreme hair styles, such as brightly-colored Mohawks.

**GOTH** While goth has several historic definitions, including references to the Roman Empire, Western European architecture and eerie literature, it also has evolved into something much different in terms of teen trends. The goth subculture, as a modern movement, began as a component of punk rock in England in the 1980s. In addition to music, this subculture also includes art and photography. Common themes include individualism, acceptance of diversity, creativity, intellectualism and romanticism. Different members of this category identify themselves in various sections of the religious realm. Crosses are commonly worn in conjunction with fashion and Christianity is a common theme in the arts, but they don't all identify themselves as Christian. Of the three subcultures, goth is much more dark in personality, expression of self and typically has more of a negative outlook on life.

# QUIZ!

Identify each band as either EMO, PUNK or GOTH.

A.



B.



C.



**Answers:**

A. Goth - Clan of Xymox  
 B. Punk - Good Charlotte  
 C. Emo - Fall Out Boy

\*What the heck is Emo\*. Andy Radin. Retrieved online April 6, 2009 from <http://www.4ourfa.com/>  
 \*What is Punk\*. 2008. Youth Radio by Denise Chu. Retrieved online April 6, 2009 from [http://www.youthradio.org/oldsite/music/030911\\_punk.shtml](http://www.youthradio.org/oldsite/music/030911_punk.shtml)  
 \*The REAL Goth FAQ\*. 2008. Lisa and Andrew. Retrieved online April 6, 2009 from <http://anon.razorwire.com/real-goth-faq/>